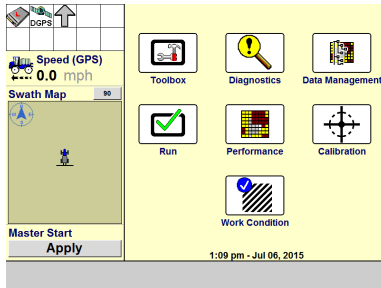
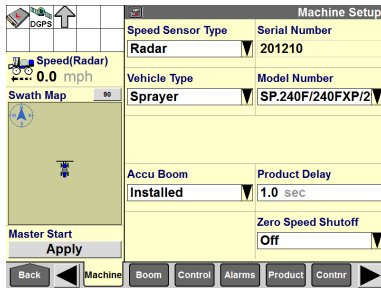


IntelliView IV Sprayer Setup Guide

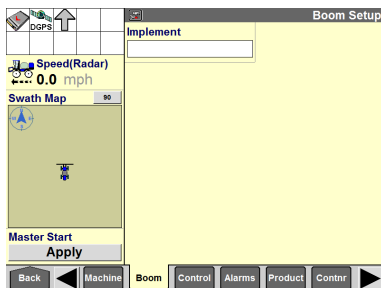
- 1** Press the “Toolbox” icon on the “Home” screen.



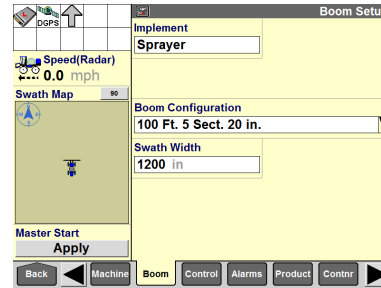
- 2** Press the “Machine” icon. Select your sprayer model. Enable AccuBoom (if equipped).



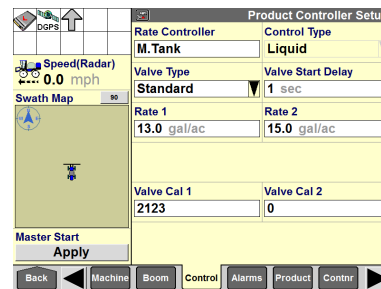
- 3** Press the “Boom” icon. Press the “Implement” window to create a new implement.



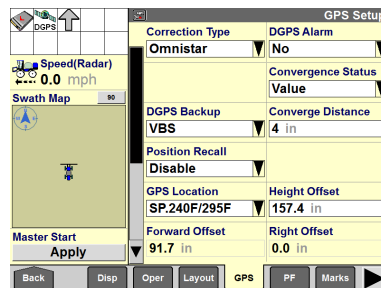
- 4** Enter a name for the implement. Select a boom configuration. Enter the swath width for autoguidance.



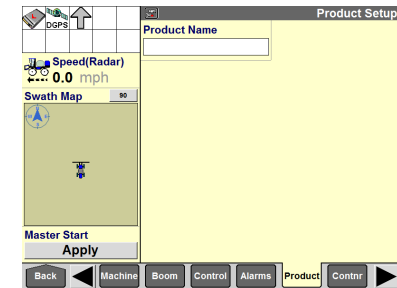
- 5** Press the “Control” icon. Select the correct valve type. Enter values for “Rate 1” and “Rate 2.”



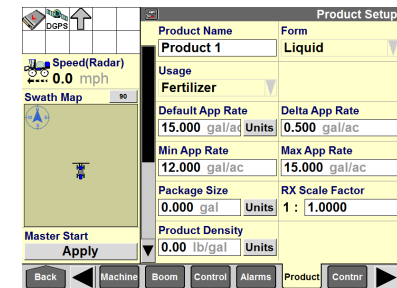
- 6** Press the “GPS” icon. Select your GPS correction type and the GPS location for your sprayer. Scroll down to select the connection type.



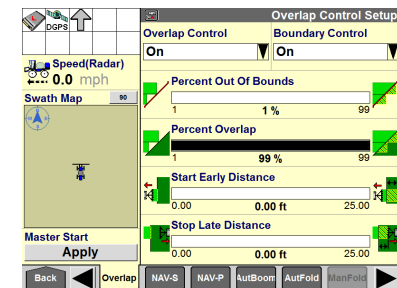
- 7** Press the “Product” icon. Press the “Product Name” window to create a new product.



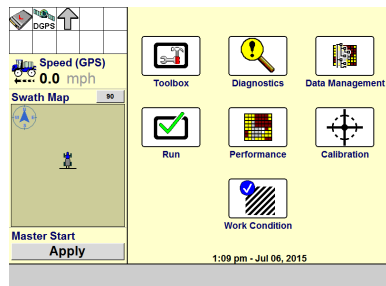
- 8** Enter the product name, form, and usage. Enter application rates: default, minimum, and maximum.



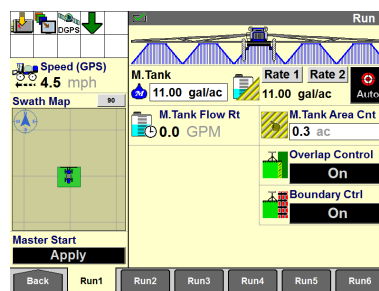
- 9** If AccuBoom is installed, press the “Overlap” icon. Enable overlap control. Enter values for the “Percent Overlap,” “Start Early Distance,” and “Stop Late Distance.” See the sprayer software operating guide for more information about overlap setup.



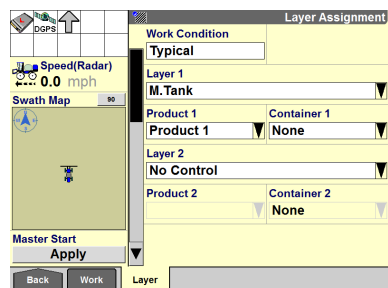
- 10** Return to the “Home” screen.
Press the “Work Condition” icon.



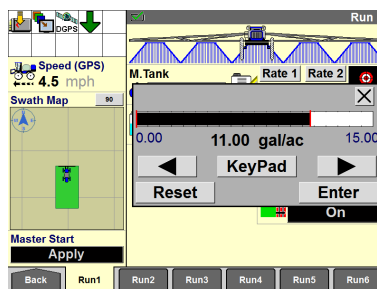
- 13** Access the “Run 1” screen.
Press the “Apply” button in the “Master Start” window to turn on the pump.
Press the mode selection button to select manual operation or automatic operation.



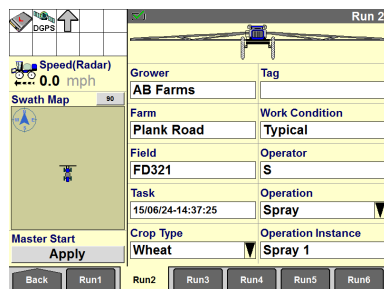
- 11** Press the “Layer” icon.
Press the “Work Condition” window and create a work condition for the current spraying operation.
Press the “Layer 1” window and select “M.Tank.”
Press the “Product 1” window and select the product that you created in Step 8.



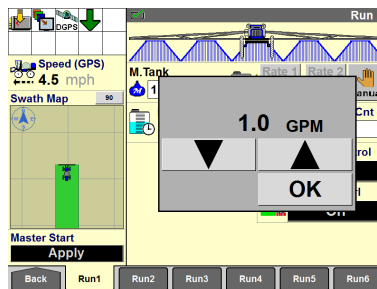
- 14** When using automatic product control, press the target application rate window.
Press the bar graph or use the arrow keys to adjust the target rate.



- 12** Access the “Run 2” screen.
Select or create a grower, a farm, and a field.



- 15** When using manual product control, press the target flow rate window.
Press the arrow keys to adjust the pump speed.



IntelliView IV Sprayer Setup Guide